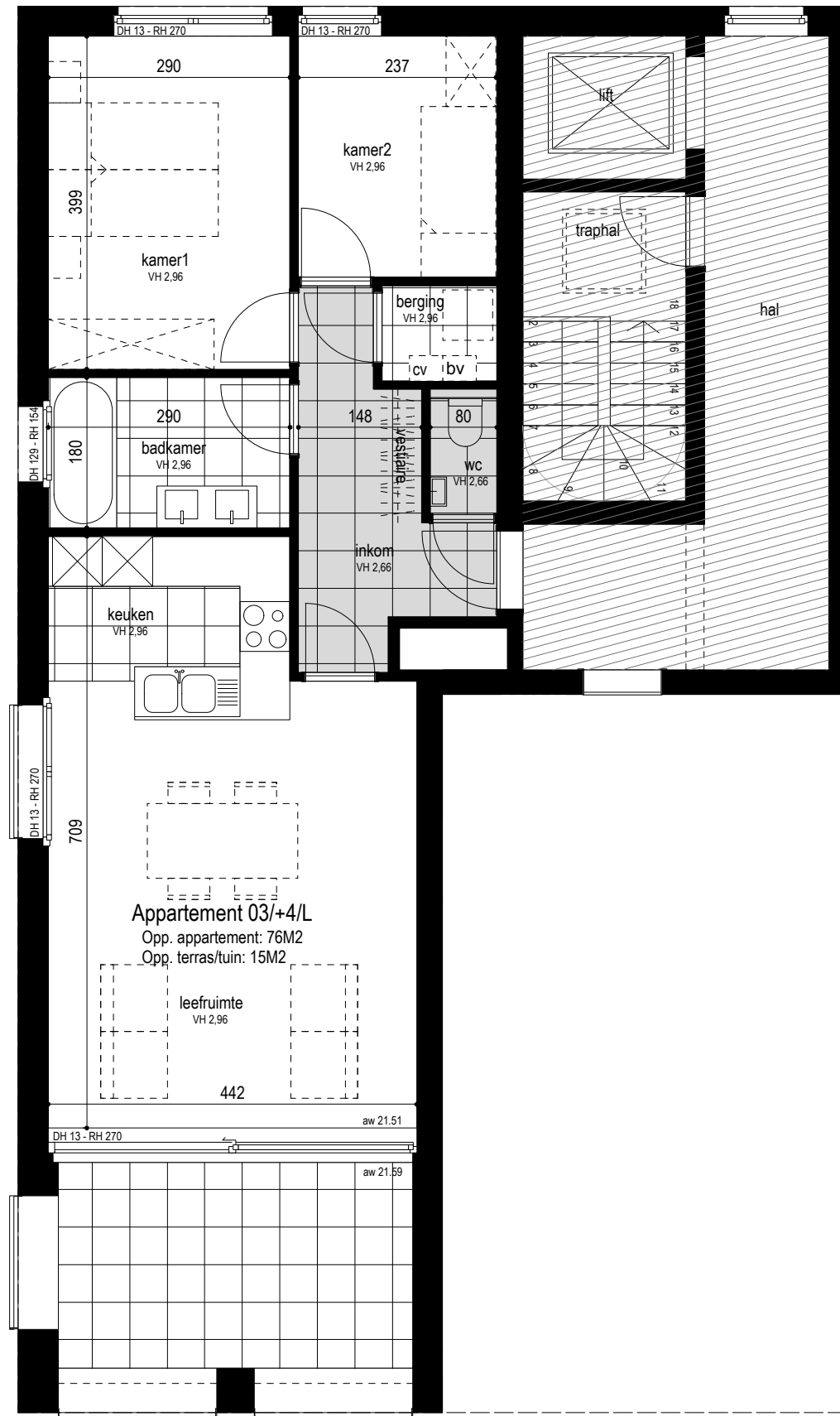


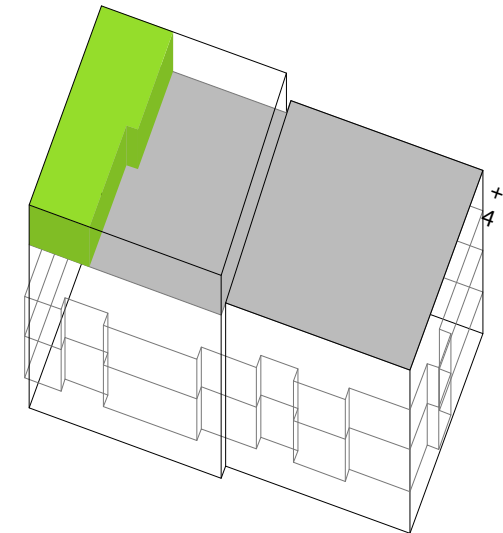


PROJECT
Dungelhoeff
ONTWERPER
RAUM Architecten



Appartement 03/+4/L
Opp. appartement: 76M2
Opp. terras/tuin: 15M2

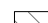
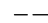



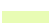


SITUERING APPARTEMENT



GEVELS



legende grondplan

-  gemene delen
-  niet inbegrepen
-  doorhangende balk
-  betegeling
-  verlaagd plafond
-  gras
-  tegels
-  tegels op tegeldragers
- aw peil (peil dorpel inkomhal +0 = 8.70)
- DH dorpelhoogte
- RH raamhoogte

